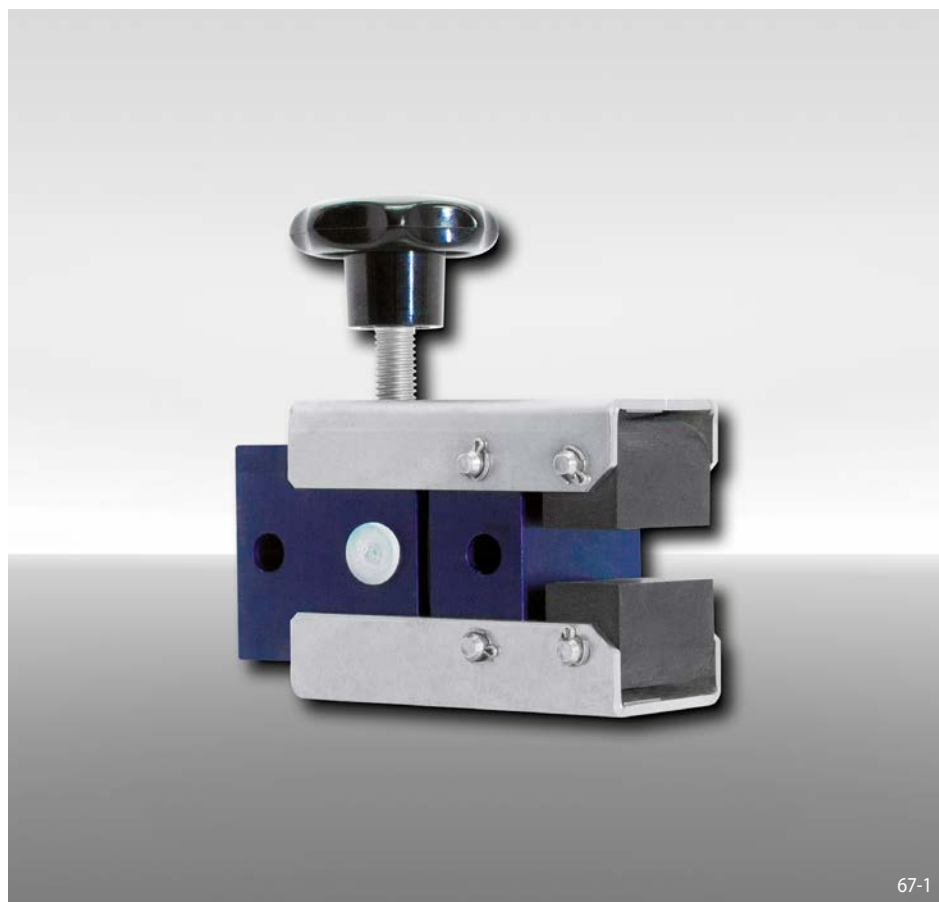


# Brake Caliper DH 010 MSM

manually activated – manually released  
with hand wheel

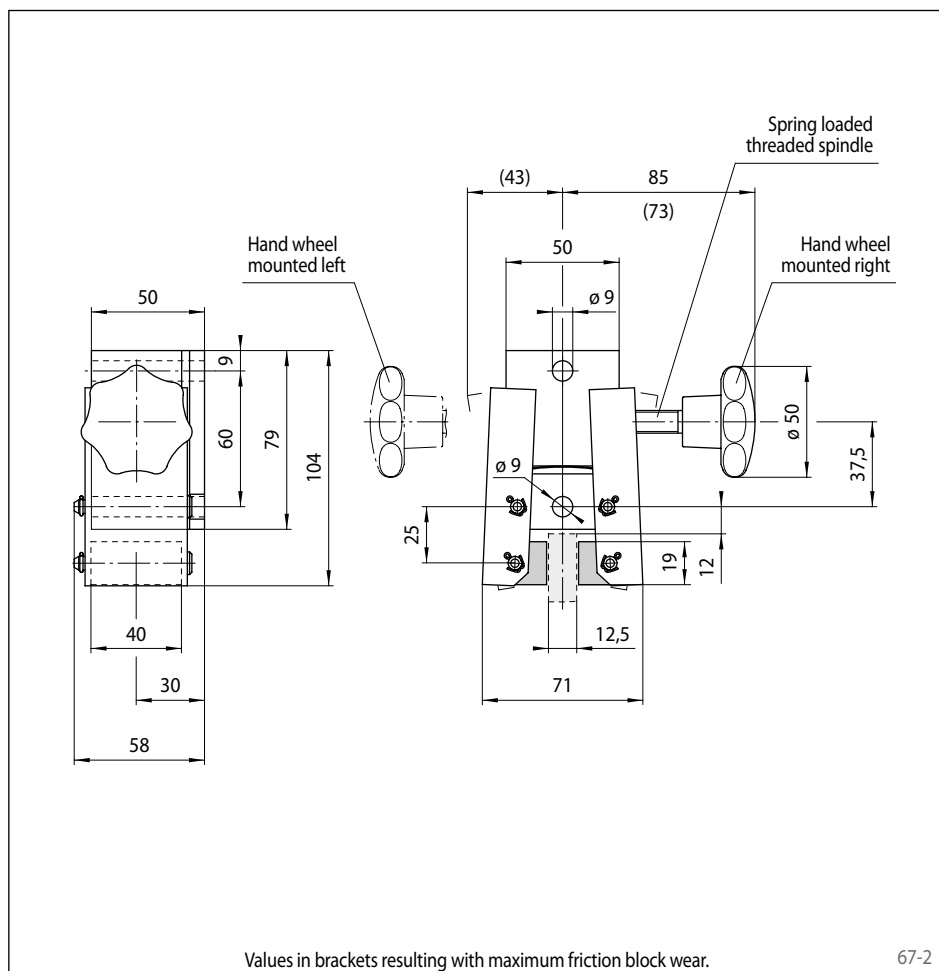


| Features  | Code   |
|---|--------|
| Brake Caliper   | D      |
| Mounting to the machine at right angles to the brake disc | H      |
| Frame size 010  | 010    |
| Manually activated  | M      |
| Manually released   | S      |
| Manual adjustment to accommodate friction block wear      | M      |
| Hand wheel 710  | 710    |
| Hand wheel mounted right or left available                | R<br>L |
| Thickness of brake disc 12,5 mm                           | 12     |

## Example for ordering

Brake Caliper DH 010 MSM, hand wheel 710, hand wheel mounted right, thickness of brake disc 12,5 mm:

DH 010 MSM - 710 R - 12



## Technical Data

| Brake Caliper DH 010 MSM with hand wheel 710 |                |
|--|----------------|
| Brake disc diameter                          | Braking torque |
| mm   | Nm             |
| 125  | 20             |
| 150  | 30             |
| 200  | 40             |
| 250  | 50             |
| 300  | 60             |
| 355  | 75             |
| Clamping force                               | 576 N          |
| Weight                                       | 1,1 kg         |

The braking torques shown in the diagram are based on a theoretical friction coefficient of 0,4. The maximum braking torques are based on an operating torque of 0,8 Nm at the hand wheel.

A spring loaded threaded spindle compensates for wear of the friction block during the braking action.

Values in brackets resulting with maximum friction block wear.

67-2