

# Brake Caliper DT 250 FEA ... ST

spring activated – electrohydraulically released  
 Drum Brake according to DIN 15 435



Figure shows product with full equipment

168-1

| Features  | Code              |
|---|-------------------|
| Brake Caliper   | D                 |
| Drum Brake  | T                 |
| Frame size 250  | 250               |
| Spring activated  | F                 |
| Electrohydraulically released                           | E                 |
| Automatic adjustment to accommodate friction block wear | A                 |
| Thrusters 451, 452 or 453 are available                 | 451<br>452<br>453 |
| Material: steel   | ST                |

### Example for ordering

Brake Caliper DT 250 FEA, thruster 452, material: steel

DT 250 FEA - 452 - ST

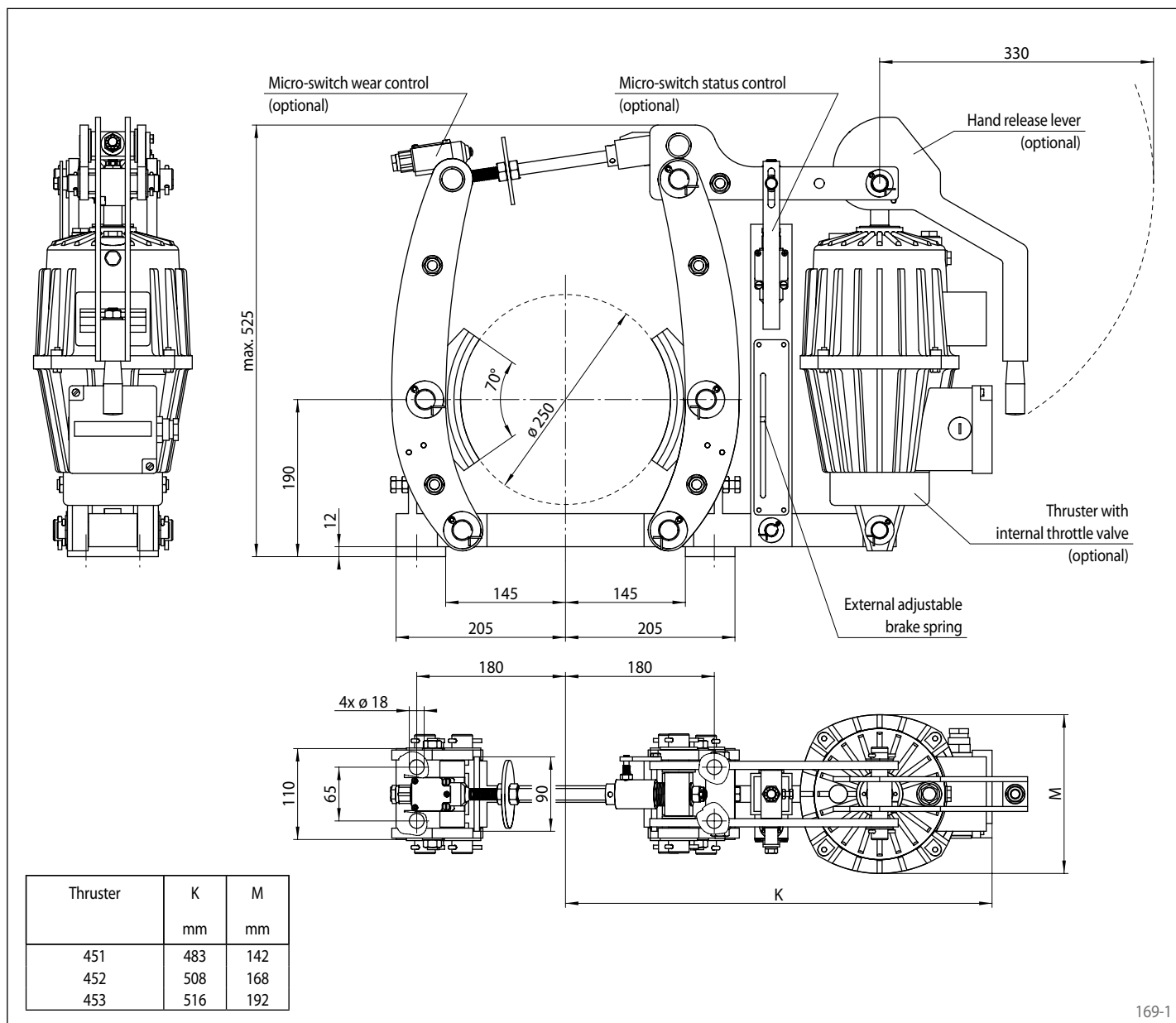
## Technical Data

|                           | Brake Caliper DT 250 FEA ... ST |                   |                   |
|---------------------------|---------------------------------|-------------------|-------------------|
|                           | with thruster 451               | with thruster 452 | with thruster 453 |
| Brake drum diameter       | Braking torque                  | Braking torque    | Braking torque    |
| mm                        | Nm                              | Nm                | Nm                |
| 250                       | 300                             | 400               | 750               |
| Clamping force            | 3000 N                          | 4000 N            | 7500 N            |
| Braking torque adjustable | 20 - 100%                       | 20 - 100%         | 20 - 100%         |
| Nominal power             | 130 W                           | 180 W             | 240 W             |
| Oil volume                | 1,4 l                           | 2,5 l             | 3,5 l             |
| Voltage                   | 230/400 V                       | 230/400 V         | 230/400 V         |
| Weight                    | 40 kg                           | 45 kg             | 47 kg             |

The braking torques shown in the table are based on a theoretical friction coefficient of 0,4.

# Brake Caliper DT 250 FEA ... ST

spring activated – electrohydraulically released  
 Drum Brake according to DIN 15 435



169-1

## Options

- Micro-switch wear control
- Micro-switch status control
- Hand release lever
- Thruster with internal throttle valve
- Thruster in heat resistant design
- Corrosion protected design
- Wider brake shoes and brake drums